

ANY INFORMATION OR PART OF THE DRAWING IS NOT SUITABLE FOR REUSE BY ANY PERSON, FIRM OR CORPORATION OR ANY OTHERS OR EXTENSIONS OF THIS PROJECT OR FOR ANY USE ON ANY OTHER PROJECT WITHOUT WRITTEN PERMISSION AND APPROVAL BY THE ENGINEER, ARCHITECT OR SURVEYOR FOR THE SPECIFIC PURPOSE. INTENDED WILL BE AT THE USER'S SOLE RISK AND WITHOUT LIABILITY OF THE ENGINEER, ARCHITECT OR SURVEYOR.

I:\622800\00006\Survey\Maumee River Crossing Minor Subdivision Plat 2 OF 2.dgn 10/8/2020 11:19:42 AM

**MINOR SUBDIVISION PLAT
PART OF LOT 65 AND 65A OF
MAUMEE RIVER CROSSING,
PLAT VOL. 15, PAGE 148,
LOCATED IN THE CITY OF DEFIANCE,
DEFIANCE COUNTY, OHIO,
IN SECTIONS 22 AND 27,
TWP. 4 NORTH, RANGE 4 EAST**

POGEMEYER DESIGN GROUP, INC.
ARCHITECTS ENGINEERS PLANNERS
1168 NORTH MAIN STREET BOWLING GREEN, OHIO 43402
(419) 352-7537

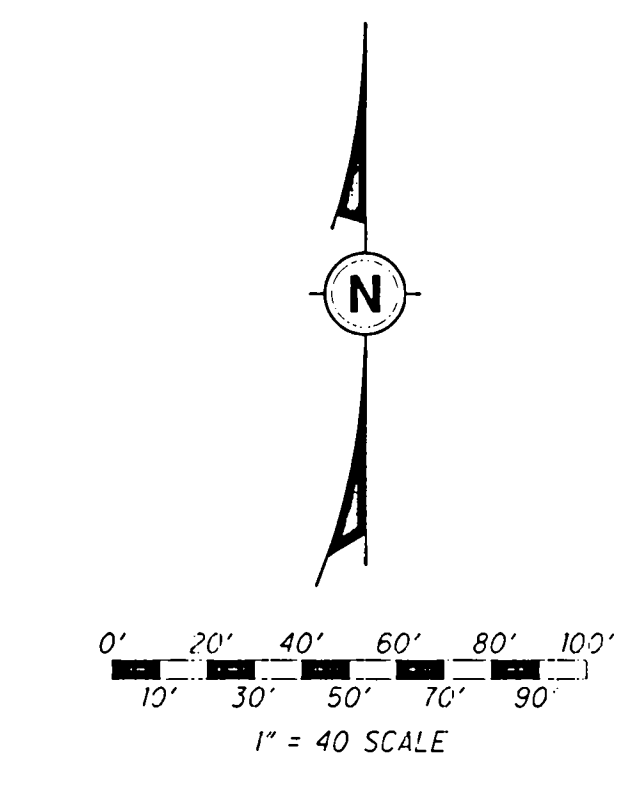
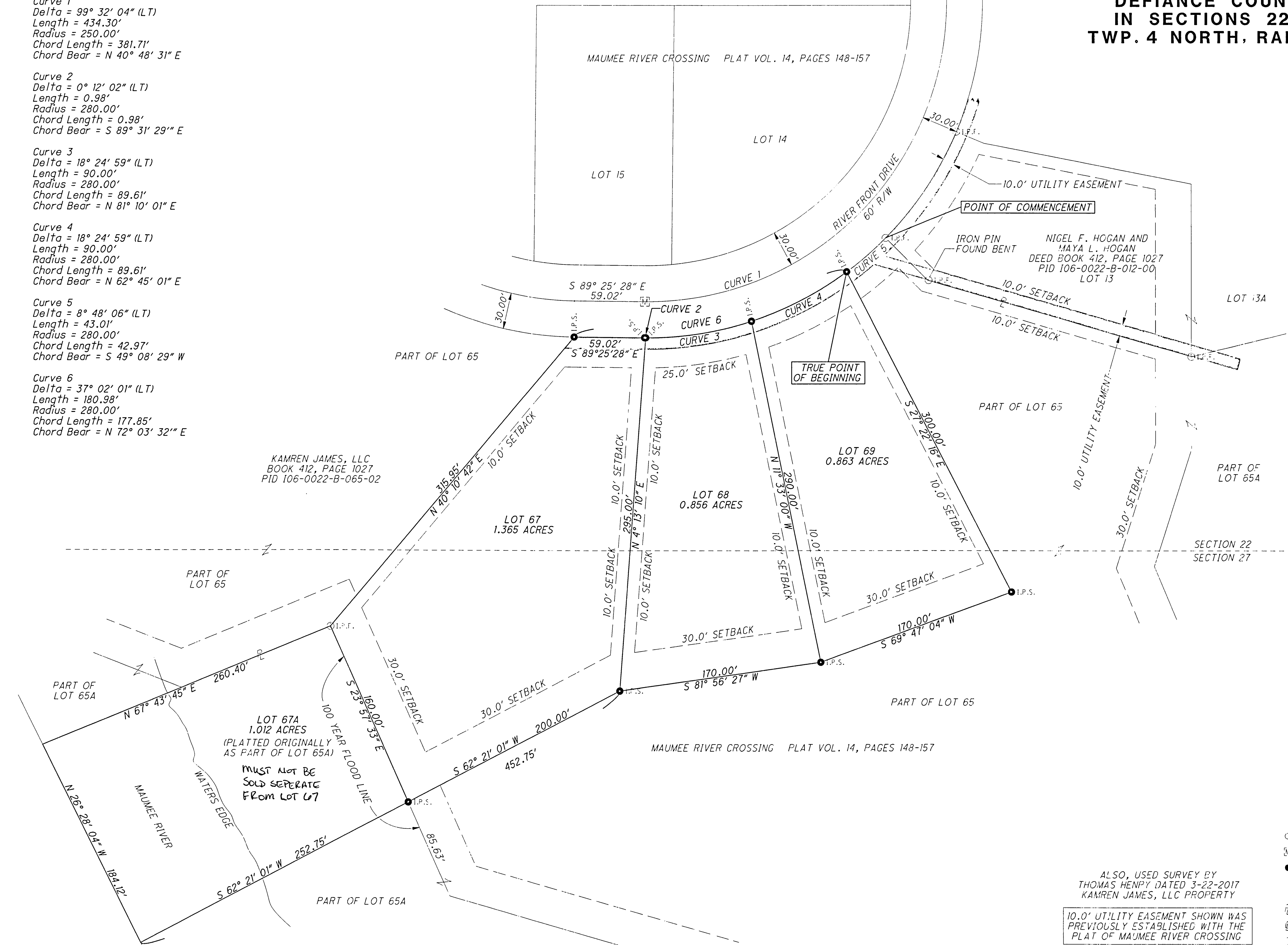
**MAUMEE RIVER CROSSING
LOTS 67, 67A, 68, & 69**

**MINOR
SUBDIVISION
PLAT**

DRAWN BY / CHECKED BY
KCC
REVISION

**2
OF
2**
JOB NUMBER
6228-006

- Curve 1
Delta = 99° 32' 04" (LT)
Length = 434.30'
Radius = 250.00'
Chord Length = 381.71'
Chord Bear = N 40° 48' 31" E
- Curve 2
Delta = 0° 12' 02" (LT)
Length = 0.98'
Radius = 280.00'
Chord Length = 0.98'
Chord Bear = S 89° 31' 29" E
- Curve 3
Delta = 18° 24' 59" (LT)
Length = 90.00'
Radius = 280.00'
Chord Length = 89.61'
Chord Bear = N 81° 10' 01" E
- Curve 4
Delta = 18° 24' 59" (LT)
Length = 90.00'
Radius = 280.00'
Chord Length = 89.61'
Chord Bear = N 62° 45' 01" E
- Curve 5
Delta = 8° 48' 06" (LT)
Length = 43.01'
Radius = 280.00'
Chord Length = 42.97'
Chord Bear = S 49° 08' 29" W
- Curve 6
Delta = 37° 02' 01" (LT)
Length = 180.98'
Radius = 280.00'
Chord Length = 177.85'
Chord Bear = N 72° 03' 32" E



- LEGEND**
- I.P.S. Iron Pin Found
 - ⊠ Monument Box Found
 - I.P.S. Iron Pin Set - 5/8" x 30" steel rod with yellow cap stamped "Pogemeyer Design Group Survey Marker"
 - Property Line
 - Center-line of Road
 - Property Ownership Hook

ALSO, USED SURVEY BY
THOMAS HENRY DATED 3-22-2017
KAMREN JAMES, LLC PROPERTY

10.0' UTILITY EASEMENT SHOWN WAS
PREVIOUSLY ESTABLISHED WITH THE
PLAT OF MAUMEE RIVER CROSSING