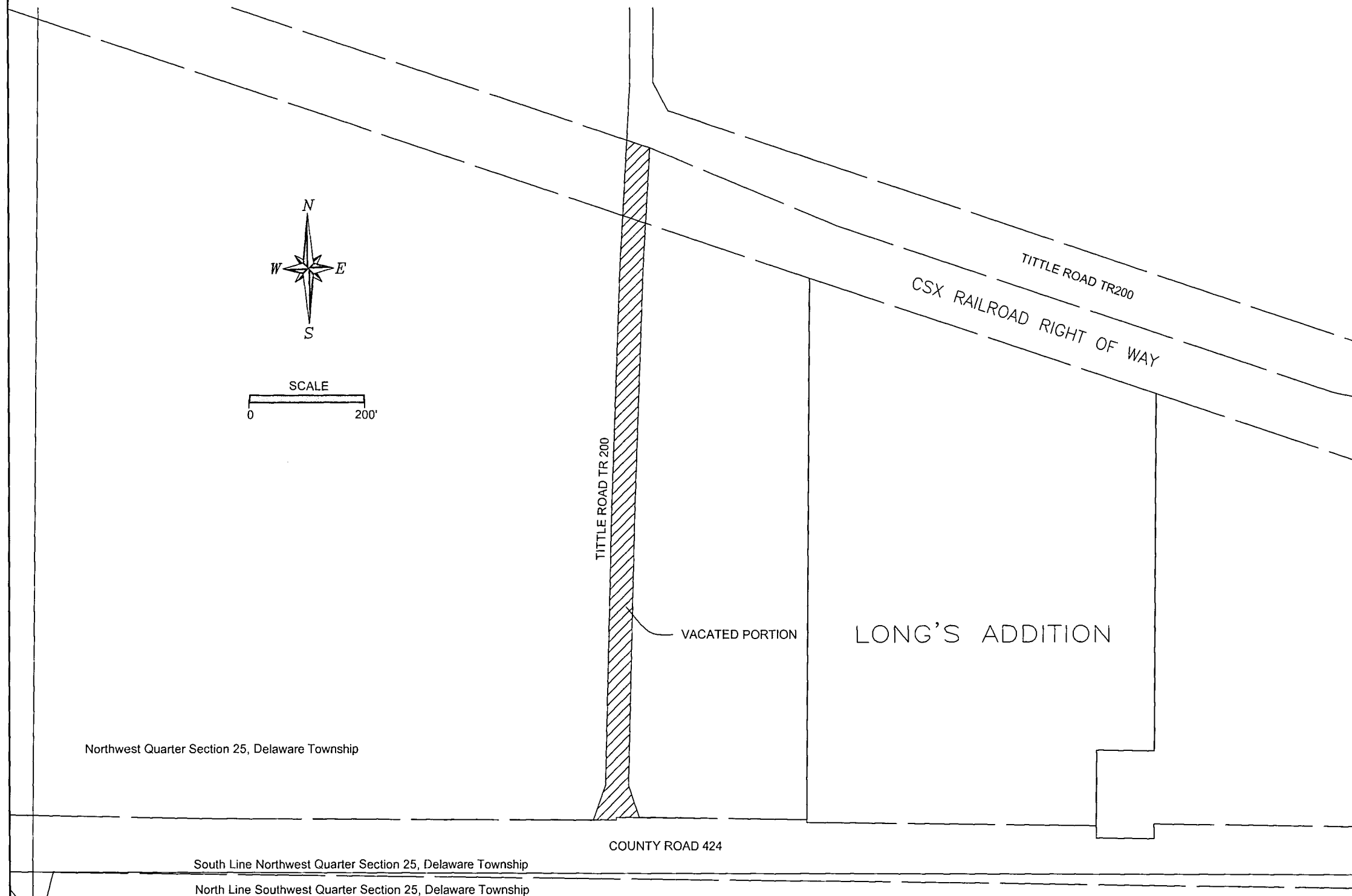


Vacation of Portion of Tittle Road Section 25, Delaware Township, Town 4N, Range 3E Defiance County, Ohio



Plat prepared by
The Defiance County Engineer's Office
Warren Schlatter
Warren Schlatter P.E., P.S. County Engineer

This plat shows the vacation of Tittle Road, TR200 to the south of the north right of way line of CSX Railroad Right of Way.

The original location of TR 200 is recorded in the Defiance County Commissioners Journals in the resolution dated February 14, 1876 in Book B, Page 90.

This vacation was approved by the Defiance County Commissioners by a resolution dated 03-20, 2023 and is recorded in Volume 169, resolution 23-03-109 of the Defiance County Commissioners Journals.

DEFIANCE COUNTY AUDITOR CERTIFICATION
I, the Defiance County Auditor, do hereby acknowledge receipt of the Plat.

Jill Little
Jill Little, Defiance County Auditor

3-21-23
Date

#883
Filed and Recorded this 21st day of March, 2023 at 10:34 a.m.
Plat Book Volume 15, Page 9

Carla Parsons
Defiance County Recorder #000

Northwest Quarter Section 25, Delaware Township

South Line Northwest Quarter Section 25, Delaware Township

North Line Southwest Quarter Section 25, Delaware Township