

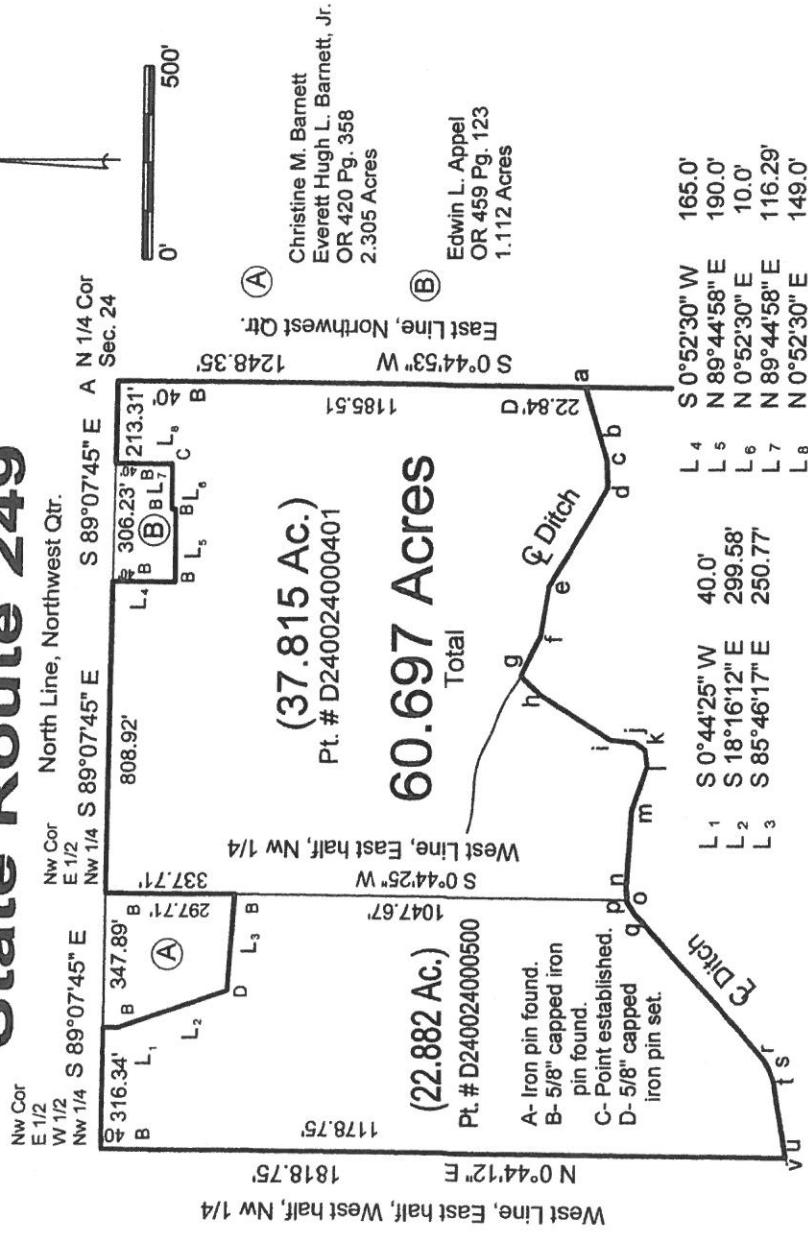
# Plat of Survey

Being a part of the Northwest quarter (1/4) of Section 24, Township 5 North, Range 2 East, Farmer Township, Defiance County, Ohio.

For... Del-mar Farms, Inc.

DB 211 Pg. 292 OR 389 Pg. 447

## State Route 249



ab	S 73°01'40" W	116.78'
bc	S 72°59'58" W	82.29'
cd	S 88°08'45" W	70.64'
de	N 59°18'19" W	299.48'
ef	N 80°55'30" W	127.13'
fg	N 63°27'46" W	117.34'
gh	S 42°59'54" W	75.04'
hi	S 32°18'10" W	214.40'
ij	S 06°02'03" W	62.65'
jk	S 36°54'42" W	32.87'
kl	S 80°40'22" W	42.61'

lm	N 71°07'21" W	122.61'
mn	N 86°25'33" W	200.70'
no	S 85°36'06" W	30.52'
op	S 85°36'06" W	5.40'
pq	S 58°11'29" W	36.58'
qr	S 47°43'09" W	512.34'
rs	S 60°56'16" W	31.32'
st	S 70°27'52" W	33.64'
tu	S 80°53'20" W	186.56'
uv	S 75°10'48" W	11.20'

L <sup>4</sup>	S 0°52'30" W	165.0'
L <sup>5</sup>	N 89°44'58" E	190.0'
L <sup>6</sup>	N 0°52'30" E	10.0'
L <sup>7</sup>	N 89°44'58" E	116.29'
L <sup>8</sup>	N 0°52'30" E	149.0'

I hereby declare that I did perform this survey and that it is correct to the best of my knowledge and belief.

*Thomas J. Henry*

Thomas J. Henry  
Registered Surveyor No. 6787

