



# Summit Sentinel

MONTHLY NEWSLETTER

DECEMBER 2024 EDITION

**SUMMIT 60  
SOCIAL CENTER &  
SENIOR SERVICES  
HEADQUARTERS**  
140 E. Broadway St.  
Defiance, OH 43512  
**Phone:** 419-782-3233  
**Monday—Friday**  
7:00am—3:00pm

**SUMMIT 60 SOCIAL  
CENTER OF HICKSVILLE**  
708 E. High St.  
Hicksville, OH 43526  
**Phone:** 419-769-8046  
**Monday & Thursday**  
9:00am—2:00pm

## **2024 EVENT SPONSORS**

Thank you to this years event sponsors, with your support we are able to bring great events to the seniors of Defiance County!

**2024 Premier  
Events Sponsor:**  
**Sam Hornish**

**Event Sponsors:**  
Moose Lodge of Defiance  
Jim Schmidt Dealerships  
VFW of Defiance  
Arc Solutions  
General Motors Defiance  
Nemco Food Equipment  
The Wholesale House



## ***CHRISTMAS FOR KIDS***



Join us in the season of giving as we collect unwrapped, new toys & monetary donations for Christmas for Kids. This charity is facilitated by Mix 98.1 & the Marine Corp. League. We have a barrel in the

lobby in Defiance for toy donations and monetary can be given at both centers, now though our Annual Christmas luncheon, Thurs. Dec.12th! Thank you for your kindness & support!

### **"SUMMIT SENTINEL"**

**PUBLISHED BY: DEFIANCE COUNTY SENIOR SERVICES  
140 E. BROADWAY ST. | DEFIANCE, OH 43512**

**How to make Trip & Event Reservations**

We love seeing all of you excited for our events and trips!

To best serve everyone fairly, we have set up the following guidelines:

- 1- Reservations can only be made after 9am on the 1st Monday of the month.  
*Unless another date is noted in the newsletter*
  - 2- We are only accepting in person reservations at both centers. Movies included.  
*No more than 2 tickets per person at a time.*
  - 3- Your non-refundable fee / ticket must be paid in order to reserve a spot.
- If you are driving yourself, you must still make your reservations with Dawn or Jenn, as we can only accommodate a set amount.

Thank you for your understanding & lets have some fun!!



**CHRISTKINDL MARKET**

**Thurs. Dec. 5th | 4:00 pm  
Bryan, OH | \$5 Transportation**

Join us for a kick off to Christmas in Bryan for this outdoor marker and to Jackie Blues for dinner!

**SUMMIT 60 OF HICKSVILLE CHRISTMAS PARTY**

**Mon. Dec. 9th | 11:30am  
Tickets - \$5**

The Christmas spirit is buzzing at Summit 60 of Hicksville for a Pizza Party with Holiday Bingo!

**CHRISTMAS CRUISE THRU**

**Tues. Dec. 10th | 4:00pm  
Hicksville, OH | \$5 Transportation**

We are making our way to the light extravaganza at the fair grounds as well as dinner before at Iron Horse in Sherwood.

**ANNUAL CHRISTMAS LUNCHEON**

**Thurs. Dec. 12th | 11:30am  
Tickets only \$10**

More info to the left!

**ARCHBOLD CHRISTMAS LIGHTS**

**Mon. Dec. 16th | 4:00pm  
Archbold, OH | \$5 Transportation**

Join us for a stroll through the park to view the amazing lights with dinner Before at Downtown Restaurant.

**CAROLING WITH TINORA JR, HIGH**

**Tues. Dec. 17th | 10:00am**  
Join us in the gym for carols, cookies and punch, need I say more?!

**HOLIDAY BAKE SALE**

**Fri. Dec. 20th | 9:00am-2:30pm**  
Our Annual Bake sale with all the goodies you need, will be held in the front lobby!

**DAY AT THE MOVIES**

**Fri. Dec. 27th | 10:00am |  
Sponsored by Kingsbury Place**  
Join your friends for a great movie, popcorn and pop at Phoenix Theater in Defiance. The 1st 24 people signed up are free, only \$10 for anyone after.

**NEW YEARS EVE BRUNCH**

**Tues. Dec. 31st | 9:30am**  
In the Café! Suggested Donation of \$3

**Annual Summit 60 Social Center  
Christmas Luncheon**

**Thurs. December 12th | 11:30am**

**Tickets only \$10**

**Please bring a new and unwrapped toy for our  
Christmas for Kids toy drive!**



Join us for a delicious holiday feast prepared by our very own kitchen crew! Enjoy the food, friends, door prizes and 50/50 here at Summit 60 in Defiance. After lunch we will be playing SINGO BINGO, Christmas Edition, and you wont want to miss this!

- Menu Includes:**
- Beef Pot Roast**
  - Seasoned Diced Potatoes**
  - Glazed Baby Carrots**
  - Sweet Baked Apples**
  - Dinner Rolls**

**Check out the  
upcoming  
trips here!**

**Fri. Jan. 24th  
BGSU Hockey 7pm  
@BGSU  
\$25 tickets and transport**

Tickets on sale from Dec. 1st—Dec.  
31st only 24 seats available

**Fri. Feb 21st  
Komets Hockey 7:30  
@Ft. Wayne Memorial  
\$30 tickets and transport**

Tickets on sale from Dec. 1st—Dec.  
31st only 24 seats available

**Thurs. March 13th  
Disney on ICE 7:00pm  
@ Ft. Wayne memorial  
\$30 tickets and transport**

Tickets on sale from Dec. 1st—Dec.  
31st only 24 seats available

# SUMMIT 60 SOCIAL CENTER OF DEFIANCE ACTIVITIES

DECEMBER 2024 NEWSLETTER | PAGE 03

MONDAY	TUESDAY	WEDNESDAY	THURSDAY	FRIDAY
2	3	4	5	Birthday Day! 6
9-1pm Medicare Appts - By appointment only 9-Cardio Drumming 9:30 Pepper 10:30- Puzzles 12:30 Pie Bingo with Glen Park 2:00- Word Games & Advanced Coloring	9-10:30 -Shopping at Kroger's 9:30 Pepper 10- Bible Study 11:00—Puzzles 1-2 -Zumba Gold-\$5 2pm-Scrabble	9- Cardio Drumming 9- Jewelry Making 9:30- 2pm Yahtzee Tournament 10- Cardio Drumming 12:30 Skip Bo 2:00- Boggle 3:45- Yoga- \$5	9:30 Pepper 10:00 Shoot Pool 11:30 Blood Pressures with Health Dept. 12:30 Bingo with Vancrest 1- Alzheimer'S Support Group 2:00—Uno 4- Senior's Nite Out-\$5	9-Cardio Drumming 9:30 Pepper 9:30-11:30- Stepping on By Health Dept. 10- Tai Chi 11:30 Birthday Lunch 12:30—Left, Right, Center 1-2 -Zumba Gold-\$5 2—Pacman & Pinball
9	10	11	12	13
9- Cardio Drumming 9:30 Pepper 10- Cardio Drumming 10:30 Puzzles 12:30 Bingo by North Crest 2:00- Word Games & Advanced Coloring	9-10:30 Shopping at Meijer's 9:30- Pepper 10- Bible Study 11:00- Puzzles 1-2 -Zumba Gold-\$5 2:00 Scrabble 4pm Christmas Cruise Thru-\$5	9- Cardio Drumming 9:30-2:30- Yahtzee Tournament 10-Cardio Drumming 10:30-2pm- UNO 12:30 Skip Bo 2:00- Boggle 3:45-Yoga-\$5	9:30- Pepper 10:00 Shoot Pool <b>Annual Christmas Luncheon</b> <b>11:30-1:15 with SINGO Bingo -\$10</b> 2:00—Uno	<b>Closed for Staff Training</b>
16	17	18	19	20
9- Cardio Drumming 9:30 Pepper 10- Cardio Drumming 10:30 Euchre Tournament 12:30 Bingo with Kingsbury Place 2:00- Word Games & Advanced Coloring 4:00 Archbold Christmas Lights-\$5	9-10:30 Shopping at Walmart 9:30- Pepper 10- Bible Study 10- Tai Chi 10-10:30-Caroling with Tinora Jr. High Choir 1-2 -Zumba Gold-\$5 2:00-Scrabble	9-Cardio Drumming 9- Jewelry Making 9:30 Yahtzee Tournament 10- Cardio Drumming 12:30 -Skipbo 2:00- Boggle 3:45 Yoga -\$5	9:30 Pepper 9:30- 11:30- Grief Support Group 10:00 Shoot Pool 1-2pm Creative Crafts 2:00—Uno	9-2pm Christmas Bake Sale 9- Pepper 9- Cardio Drumming 10- Tai Chi 12:30—Left, Right, Center 1-2 Zumba Gold- \$5 2—Pacman & Pinball
23	Center Closed. 24	Center Closed. 25	26	27
9- Cardio Drumming 9:30 Pepper 10 Cardio Drumming 11- Penny Pitch by Meadows of Kalida 12:30 SkipBo 2:00- Word Games & Advanced Coloring			9-2 Pepper 10:00 Shoot Pool 11:30 Blood Pressures By Lexi 12:30 Dominos 2:00—Uno	9- Cardio Drumming 9:30 Pepper 10- Movie Day 10-Tai Chi 12:30—Left, Right, Center 1-2 Zumba Gold-\$5 2—Pacman & Pinball
30	31			<b>KEY:</b>
9- Cardio Drumming 9:30 Pepper 10- Cardio Drumming 10:30- Puzzles 12:30 pm- Skip Bo 2:00- Word Games & Advanced Coloring	9:30am—New Year's Eve Brunch 9:30 Pepper 10 Bible Study 10- Tai Chi Closed at 12pm for New Years Eve			<b>Green: Trip or Event</b> <b>Red: Theme of the day</b> <b>Orange: Grocery Trip</b> <b>Blue: Activities with a low cost to them!</b>



©PNTS

**WE WANT YOUR IDEAS!**

We have a lot more ideas for activates, trips and events in the works, but we want to know what you want! If you have any suggestions please let our Activities Coordinator, Dawn or our Community Outreach Manager, Jenn know at 419-782-3233!

**RIDDLE OF THE MONTH**

**Not there yesterday, and also not there tomorrow night. Opened up on the eve, sharing hope and love on yuletide. What is it?**

A present



**NO MEALS ON WHEELS**

We will be closed and not delivering meals on the following dates:

**Thursday Nov. 28th and Friday Nov. 29th**



**The Defiance County Veterans Office**  
WE CONNECT VETERANS TO BENEFITS

**VA CLAIMS, APPLY FOR VA HEALTHCARE, VA TRANSPORTATION, EMERGENCY ASSISTANCE**

Veterans Crisis Line - Confidential, Free, Specialized Support 24/7 365 Days A Year

**Veterans Crisis Hotline**

**1-800-273-8255 Press 1 or text 838255**

**OFFICE: 419-782-6861 | FAX: 419-782-6713**

📍 1300 E Second St., Suite 102, Defiance, OH

✉ veterans@defiancecounty.oh.gov

🌐 www.defiance-county.com/veterans-office/

**Defiance County Ohio Veterans Office**

**DEFIANCE PUBLIC LIBRARY SYSTEM OFFERS HOMEBOUND DELIVERY**

**YOUR LIBRARY PICKS, DELIVERED TO YOUR DOOR!**

**CALL 419-782-1456 TO LEARN MORE.**

AVAILABLE TO ELIGIBLE PATRONS | [DEFIANCIELIBRARY.ORG](http://DEFIANCIELIBRARY.ORG)



**THE MEADOWS OF KALIDA**

**ASSISTED LIVING  
MEMORY CARE  
ADULT DAY SERVICES  
REHAB & SKILLED SERVICES**

419-664-5590

755 Ottawa St, Kalida, OH 45853

meadowsofkalida.com | f

THS-9129-24



**Winter Fall Prevention:**  
 According to the National Council on Aging, Falls are the leading cause of injury for older adults, and slippery surfaces from winter weather pose a predictable risk. More than one in four older Americans fall every year. To help you stay safe, here are some winter fall prevention tips for seniors:

1. Don't go out if you don't have to.
2. Slow down and give yourself extra time.
3. Dress for the weather, even if you don't think you'll be outside for long.
4. Carry a cell phone, even for a quick trip to the mailbox.
5. Wear non-slip boots or shoes
6. Use something to steady yourself
7. Clear your path and / or spread something on the ground for traction as you walk.

## Are you facing a utility disconnection?

**The Special Reconnect Order\* can help!**

- Available one-time per utility from Oct. 14, 2024, through April 18, 2025
- Available to any household regardless of income level
- A reconnection fee of no more than \$36 upfront may be charged if the service has been disconnected, any remaining amount over \$36 will appear on the following bill
- The \$175 may be split between electric and natural gas if used for both at the same time
- Municipal utilities and rural co-ops are not required to offer the Special Reconnect Order


\*Authorized by the Public Utilities Commission of Ohio (PUCO)

**For more utility assistance information visit:**  
[www.occ.ohio.gov/utilityassistance](http://www.occ.ohio.gov/utilityassistance)



Office of the Ohio Consumers' Counsel  
[www.occ.ohio.gov](http://www.occ.ohio.gov)

**THRIVE**  
 LOCALLY




## Ohio Senior Insurance

**Big Changes for 2025**

**Your Medicare & Retirement Specialists**  
**Annual Enrollment Oct. 15 - Dec. 7, give us a call 1-866-603-0491**

**Medicare, Life Insurance, Long-term Care, Home Health Care, Final Expense & Annuities**  
*In-Home Appointments Available*  
 1101 Ralston Ave., Ste. A • Defiance



**Amanda Nigh**



**Stephanie Wagner**

**SUPPORT OUR ADVERTISERS!**



## CHOICE

PHYSICAL THERAPY  
 PASSIONATE. PERSONAL. PROFESSIONAL.

[www.choice-physicaltherapy.com](http://www.choice-physicaltherapy.com)  
**6 am-7pm Monday-Friday • Saturday by appointment**  
 143 East High Street, Hicksville, OH 43526

One on one Personalized care  
 All appointments are with a Physical Therapist  
 Local Physical Therapists  
 In- Home Physical Therapy  
**(419) 769-8400**



SUMMIT 60 SOCIAL CENTER PRESENTS  
HAWAII

WITH NORWEGIAN CRUISE LINE ON THE PRIDE OF AMERICA  
8 DAYS / 7 NIGHTS ~ NOVEMBER 1 – 8, 2025

DAY	PORT	ARRIVE	DEPART
1	Honolulu, Oahu (EMBARK)		7:00 pm
2	Kahului, Maui	8:00 am	Overnight
3	Kahului, Maui		6:00 pm
4	Hilo, Hawaii	8:00 am	6:00 pm
5	Kona, Hawaii	7:00 am	5:30 pm
6	Nawiliwili, Kauai	8:00 am	Overnight
7	Nawiliwili, Kauai		5:30 pm
8	Honolulu, Oahu (DISEMBARK)	7:00 am	

**Oceanview and Balcony Cabins Get ALL 4 perks! Inside Cabins Pick 2 Perks.  
PLUS Each Cabin receives a \$100 onboard credit!  
Package is subject to change. All guests in a cabin must choose the same perks.**

- Hawaii Beverage Package\*
  - Specialty 2-Meal Dining Package for Balcony Cabins\*
  - Specialty 1-Meal Dining Package for Inside & Oceanview Cabins\*
  - 150 Minute Internet Package per person
  - \$50 Shore Excursion Credit per cabin\*
- \*Gratuities are included. Call for details ~ 1-800-423-0247. Hawaii Beverage Package and Specialty dining applies to first 2 guests in cabin. The \$50 Shore Excursion Credit applies to guest 1.

**INCLUDES GRATUITIES FOR AMENITY PACKAGE AND ON-BOARD SERVICE GRATUITIES**

Inside Cabin Category	IA	\$5,300
Inside Cabin Category	IB	\$5,300
Balcony Cabin Category	BB	\$5,955

Rates are per person double occupancy and include roundtrip airfare from Ft. Wayne, cruise, service gratuities, beverage and dining package gratuities, port charges, government fees, taxes and transfers to/from ship. AIR PRICES ARE SUBJECT TO CHANGE AND WILL BE TICKETED ONCE YOUR GROUP IS PAID IN FULL. FLIGHTS ARE NON-REFUNDABLE ONCE TICKETED.

**DEPOSIT POLICY:** An initial deposit of \$350 per person double occupancy or \$700 per person single occupancy is required in order to secure reservations and assign cabins. Final balance is due by June 4, 2025. **These are the best rates around! Those who book early get the best prices and the best cabin locations. [MAKE A RESERVATION](#) at [grandamericantours.com](#).**

*Itinerary, Perks, and Prices are subject to change.*

**FOR RESERVATIONS AND INFORMATION CONTACT JENNIFER NELSON AT 419-769-8046**

6/4/25 CW

# SUMMIT 60 SOCIAL CENTER OF HICKSVILLE ACTIVITIES

PAGE 07 | DECEMBER 2024 NEWSLETTER

MONDAY	TUESDAY	WEDNESDAY	THURSDAY	FRIDAY
<b>02</b>	<b>03</b>	<b>04</b>	<b>05</b>	<b>06</b>
9am– SKIPBO 9am– Rummy 9am– Puzzles  1pm– Bingo with Antwerp Manor	<b>Center Closed.</b>	<b>Center Closed.</b>	9am– SKIPBO 9am– Rummy 9am– Puzzles  11am– Blood Pressure Checks with Lexie  1pm– Penny Pitch  Christkindl Market	<b>Center Closed.</b>
<b>09</b>	<b>10</b>	<b>11</b>	<b>12</b>	<b>13</b>
9am– SKIPBO 9am– Rummy 9am– Puzzles  1pm– Bingo with Select Medical Rehab  Christmas Party— Summit 60 of Hicksville	<b>Center Closed.</b>  Christmas Cruise Thru	9am– SKIPBO 9am– Rummy 9am– Puzzles  1pm– Name the Carol-Charades	<b>Center Closed.</b>  Christmas Luncheon Summit 60 of Defiance	<b>Defiance &amp; Hicksville Centers Closed</b>
<b>16</b>	<b>17</b>	<b>18</b>	<b>19</b>	<b>20</b>
9am– SKIPBO 9am– Rummy 9am– Puzzles  1pm– Bingo with Vancrest  Christmas Lights Archbold, OH	<b>Center Closed.</b>	<b>Center Closed.</b>  <a href="#">12:30pm - Commodity Box Pick up</a>	9am– SKIPBO 9am– Rummy 9am– Puzzles  11am–Blood Pressure Checks with Lexie  1pm– Fact or Fiction	<b>Center Closed.</b>
<b>23</b>	<b>Center Closed. 24</b>	<b>Center Closed. 25</b>	<b>26</b>	<b>27</b>
9am– SKIPBO 9am– Rummy 9am– Puzzles  11am– Musical Entertainment– Allie Nelson  1pm– Summit 60 BINGO!			9am– SKIPBO 9am– Rummy 9am– Puzzles  1pm– Skip-Bo Tournament	<b>Center Closed.</b>  Movie Day
<b>30</b>	<b>31</b>			
9am– SKIPBO 9am– Rummy 9am– Puzzles  1pm– Summit 60 BINGO!	<b>Center Closed.</b>  Brunch 9:30am– Summit 60 of Defiance		<b>When Summit 60 of Hicksville is Closed. Please reach out to Jenn to schedule Transportation to Summit 60 in Defiance!</b>	<b>KEY:</b> Green: Trip or Event Red: Theme of the day Orange: Grocery Trip Blue: Activities with a low cost to them!



## TRANSPORTATION

We offer transportation to doctors appointments, haircuts, medication pick-ups and more to anyone in Defiance County 60+!

**Suggested donation is only 50¢ a mile!**

Please note we do not turn away anyone who cannot afford the donation.

We offer transportation to and from Summit 60 Social Centers in Defiance & Hicksville!

Give us a call and schedule today at 419-782-3233!

## COMMODITY BOX DISTRIBUTION

40LBS OF SHELF STABLE FOOD AND 2LBS OF CHEESE!

**Wed. November 27th**

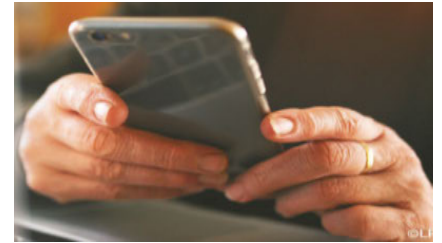
Summit 60 Defiance Center:  
1:00pm-2:30pm

Summit 60 Hicksville Center:  
12:30pm-2:00pm

This is a free program!  
For an application please contact Sue at 419-782-3233!

**DCSS**  
**140 E. Broadway St**  
**Defiance, OH 43512**  
**Attn: Sue**

Please no pets at pick up.  
Thank you!



## NEED TO CANCEL YOUR HOME DELIVERED MEAL?

Did you have an appointment that ran over, spur of the moment trip with friends, or just not going to be home today? Please give Ginny in our kitchen a call as soon as possible so we can take you off our delivery route that day at 419-782-3321!



TRUSTWELL LIVING  
KINGSBURY PLACE

419-782-6324

245 W Rosewood Ave, Defiance, OH 43512

<https://www.trustwelliving.com/senior-living/oh/defiance/kingsbury-place/>

- Assisted Living
- Respite Care
- Activities & fitness classes
- Restaurant-style dining
- Personal care
- Medication assistance

## DOES YOUR NONPROFIT ORGANIZATION NEED A NEWSLETTER?

Engaging, ad-supported print and digital newsletters to reach your community.

Visit [lpicommunities.com](http://lpicommunities.com)



Scan to contact us!



## LET'S GROW YOUR BUSINESS

Advertise in our Newsletter!

**CONTACT ME**  
**Jayne Pandey**

[jpandy@lpicommunities.com](mailto:jpandy@lpicommunities.com)  
(800) 477-4574 x6401





**DID YOU KNOW WE ARE A NATIONAL MEMBER OF MEALS ON WHEELS OF AMERICA?**

If you or someone you know is interested in receiving our home delivered meals please give us a call at 419-782-3233!



**WHERE ELSE ARE YOU GOING TO GET A MEAL FOR JUST \$3.00?!**

The answer is nowhere! Suggested donations for our dine in lunches and Meals on Wheels are only \$3, but we can get you an even better deal! If you purchase our [20 for \\$50 Meal Deal Coupons](#), that makes each meal only \$2.50!!

*\*Please note that no patron, 60 years or better will be denied meals due to inability to pay.\**



**MAKE YOUR RESERVATIONS TODAY!**

Lunch is served from 11:30am - 12:30pm, Mon - Fri at the Defiance Center.

To best serve you, please call in by 8:00am the day of to reserve your spot. An alternative meal will be available for those without a reservation.

You can make a reservation in person or by calling us at 419-782-3233!



Serving the Community for 60 years

**Defiance Moose Lodge 2094**

**Live Entertainment! Every Wednesday, Friday, and Saturday!**

~ NEVER A COVER CHARGE ~

**Food Specials & Happy Hours**

**(419) 782-2326 • 841 N Clinton St, Defiance**

Check out our facebook page to see what's happening each week!

[www.facebook.com/defiancemoose2094/](http://www.facebook.com/defiancemoose2094/)

**Place Your Ad Here and Support our Parish!**

Instantly create and purchase an ad with

**AD CREATOR STUDIO**



[4lpi.com/adcreator](http://4lpi.com/adcreator)

**ARE YOU REACHING THE MEMBERS IN YOUR COMMUNITY?**

To advertise here visit [lpicommunities.com/adcreator](http://lpicommunities.com/adcreator)

SUPPORT OUR  
ADVERTISERS!

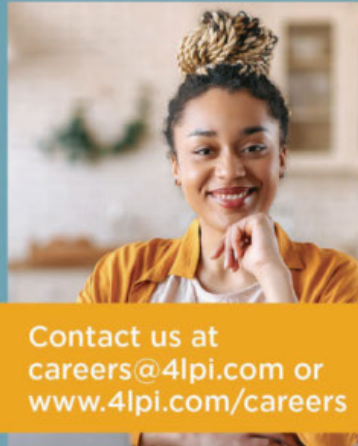
# WE'RE HIRING!

## AD SALES EXECUTIVES



BE YOURSELF.  
BRING YOUR PASSION.  
WORK WITH PURPOSE.

- Paid training
- Some travel
- Work-life balance
- Full-Time with benefits
- Serve your community



Contact us at  
[careers@4pi.com](mailto:careers@4pi.com) or  
[www.4pi.com/careers](http://www.4pi.com/careers)

Locally and family owned since 1850

*Serving All Faiths*

Offering Non-pressured and Non-solicited  
Pre-need Services • Burial Services • Cremation Services



**SCHAFFER**

Funeral Home, Inc.

**Licensed Funeral Directors:**

Dan Schaffer • Jeff Strayer • Natasha Hussey  
Hanna Schaffer • Curtis Richards

**(419) 784-2441**

529 Jefferson Ave, Defiance  
1753 S. Clinton St, Defiance

[www.schafferfh.com](http://www.schafferfh.com)



# NEVER MISS OUR NEWSLETTER!

**SUBSCRIBE**

Have our newsletter  
emailed to you.



VISIT [WWW.MYCOMMUNITYONLINE.COM](http://WWW.MYCOMMUNITYONLINE.COM)



For ad info. call 1-800-477-4574 • [www.4pi.com](http://www.4pi.com)

14-1829

# December 2024

Home Delivered Meals 419 782-3321

**MONDAY**

**TUESDAY**

**WEDNESDAY**

**THURSDAY**

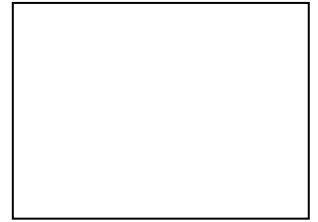
**FRIDAY**

2 Fish Sandwich Potato Wedges Cauliflower with Cheese Sauce Grape Juice	3 Pork Chop Cabbage Succotash Diced Peaches Wheat Bread	4 Beef Stew Cole Slaw Blueberry Crisp Biscuit	5 Chicken Fettuccini Alfredo Wax Beans Beets Grapes Garlic Bread	6 BBQ Ribs Baked Beans Garlic Mashed Potatoes Applesauce Dinner Roll Birthday Cake
9 Sloppy Joe Green Beans Tater Tots Pineapple	10 Salisbury Steak Mashed Potatoes Creamed Corn Apricots Dinner Roll	11 Potato Soup Tossed Salad Peas Bran Muffin	12 Beef Pot Roast Diced Potatoes Baby Carrots Baked Apples Dinner Rolls	13 Center Closed For Staff Training
16 BBQ Pork Sandwich Oven Fries Cole Slaw Peach Crisp	17 Mushroom Steak Mashed Potatoes Brussels Sprouts Banana Dinner Roll	18 Chicken Noodle Soup Tossed Salad Apple Slices with Peanut Butter V8 Juice Blueberry Muffin	19 Swedish Meatballs Buttered Noodles Peas Carrot Raisin Salad Mixed Fruit Dinner Roll	20 Grilled Chicken Sandwich Sweet Potato Fries Winter Blend Pineapple
23 Hot Beef Sandwich Oven Fries Grape Juice Diced Pears	24 <b>Closed</b> for <b>Christmas</b>	25 <b>Closed</b> for <b>Christmas</b>	26 Country Fried Steak Au gratin Potatoes Broccoli Normandy Tangerine Dinner Roll	27 Spaghetti with Meat Sauce Green Beans Cinnamon Peaches Tossed Salad Garlic Bread
30 Pepperoni Pizza Sliced Carrots Peas Pineapple Blueberry Muffin	31 <b>Close at Noon</b> <b>No Home Delivery</b> <b>Brunch in café</b> <b>9:30-10:30</b>	Menu is subject to change based on product availability		

**News**

Home delivered meals must be consumed within 30 minutes of delivery, or refrigerated and reheated at 350 degrees for 15 minutes

To cancel a meal, or inquire about ingredients, please call Ginny 419 782-3321



**fOLLOW US ON FACEBOOK AT**

**SUMMIT 60 SOCIAL CENTER & DEFIANCE COUNTY SENIOR SERVICES!**

**WE ARE HERE FOR YOU, GIVE US A CALL TODAY!**

**Nick Wichman**

*Director*  
(419) 782-3232

**Jessica Osborn**

*Business Manager*  
(419) 783-4850

**Lexie McKeen, LPN**

*Client Resource Specialist*  
(419) 783-4812

**Ginny Wiseman**

*Nutrition Manager*  
(419) 782-3321

**Jenn Nelson**

*Community Outreach Manager*  
(419) 769-8046

**Senior Services  
Main Line**

(419) 782-3233

**Sue Weller**

*Client Concierge  
& Commodities Coordinator*

**Dawn Knox**

*Activities Coordinator*

**Penny Cryer**

*Custodian*

**Suzy Mack**

*Staff Assistant*

**Kitchen Team**

*Mary Mansfield, Barb Davis,  
Sandy Kaufman, Deb Vajen*

**Meals on Wheels Team**

*Jennifer Lero, Mike Rychener,  
Myra Emmons, Vicky Healy, Jodi  
Cocke, Karen Fitzwater, Michael  
Imber, Isaiah Almanza,  
Gae Ann Lind*

**Transportation Team**

*Dennis Scott, Keith Ashbacher,  
Oline Hill, Don Heffner*



**FUNDING SOURCES FOR DEFIANCE COUNTY SENIOR SERVICES:**

**Our Senior Services Tax Levy, Area Office on Aging, Defiance County Commissioners,  
Defiance County Senior Services Auxiliary Board and generous donations from patrons like you!**

*Thank you for your continued support!*