



Defiance County
SENIOR SERVICES



Summit Sentinel

MONTHLY NEWSLETTER

MAY 2025 EDITION

CELEBRATING 50 YEARS!
1975-2025

SUMMIT 60 SOCIAL CENTER & SENIOR SERVICES HEADQUARTERS

140 E. Broadway St.
Defiance, OH 43512
Phone: 419-782-3233
Monday—Friday
7:00am—3:00pm

SUMMIT 60 SOCIAL CENTER OF HICKSVILLE

708 E. High St.
Hicksville, OH 43526
Phone: 419-769-8046
Monday & Thursday
9:00am—2:00pm

2025

EVENT SPONSORS

Thank you to this years event sponsors, with your support we are able to bring great events to the seniors of Defiance County!

Event Sponsors:

- Peter & Maureen Kennerk
- Eagles Aerie 372 - Defiance
- Eagles Aerie 2556 - Hicksville
- Jim Schmidt Dealerships
- Moose Lodge 2094 - Defiance
- Amvets Post 1991 - Defiance
- VFW Post 3360 - Defiance
- Johns Manville
- B&B Molded Products
- General Motors - Defiance
- Elks BPOE #147 - Defiance
- Arc Solutions
- REMAX of Defiance
- Bruce Guilford Real Estate

Interested in being an 2025
Event Sponsor? Please contact
Jenn Nelson at 419-769-8046



©LPI

How to make Trip & Event Reservations

We love seeing all of you excited for our events and trips!

To best serve everyone fairly, we have set up the following guidelines:

- 1- Reservations can only be made after 9am on the 1st Monday of the month.
Unless another date is noted in the newsletter
- 2- We are only accepting in person reservations at both centers. Movies included.
No more than 2 tickets per person at a time.
- 3- Your non-refundable fee / ticket must be paid in order to reserve a spot.
If you are driving yourself, you must still make your reservations with Dawn or Jenn, as we can only accommodate a set amount.

Thank you for your understanding & lets have some fun!!

"SUMMIT SENTINEL"

PUBLISHED BY: DEFIANCE COUNTY SENIOR SERVICES | 140 E. BROADWAY ST. | DEFIANCE, OH 43512



Defiance County SENIOR SERVICES

SUMMIT 60 Social Center

INVITES YOU TO THE ANNUAL

Senior Gala

CHEERS TO

50

YEARS

We invite our friends 60 years+ to join us for an evening of food, friends & prizes! Then dance the night away with entertainment by none other than



MENU

Chicken Marsala
 Roasted Baby Baker Potatoes
 Prince Charles Blend Vegetables
 Strawberry Spinach Salad
 Charcuterie Cups
 Fresh Dinner Rolls & Homemade Cinnamon Butter
 Mini Bundt Cakes

Water & Punch provided, cash bar will be available

16
MAY

DEFIANCE EAGLES
 Tickets \$25 each
 Can be purchased at our
 Defiance & Hicksville Centers

5:00PM - 9:00PM
 DOORS OPEN AT 4:00PM

Premier Event Sponsor
Eagles of Defiance Aerie #372

Band Sponsor
 Moose Lodge of Defiance #2094

Event Partner Sponsors
 Jacob's Meats, All Occasions LLC., Martha Kaup, GlennPark

Door Prize Sponsors
 Kingsbury Place, Legacy Living, Brookview Health, Laurels, Vancrest Hicksville

Upcoming
EVENTS

SENIOR NITE OUT

Tues. May 6th | 4:00pm
Wauseon, OH | \$5 Transportation
 Join us at El Jarro for a great evening chalk full fun with great friends!

LUNCH & LEARN

Wed. May 7th | 11:30am
Summit 60 Café | By Humana
 Join us for this months Lunch & Learn with special guest from Humana to discuss all of the news going on with your insurance!

MOTHER'S DAY TEA

Fri. May 9th | 10:00 am
Summit 60 Defiance Gym | FREE
 We want to celebrate all of our lovely ladies of Defiance County! If you're a Mother, an Aunt, a Sister or a Friend you are invited to join us for a Special Tea just for you!!

MYSTERY LUNCH

Wed. May 14th | 10:00 am
\$5 Transportation
 Take the headache out of deciding where you want to go out to eat and let us do it for you!

ANNUAL SENIOR GALA

Fri. May 16th | 5:00 pm
\$25 Tickets
 You do not want to miss this extravagant annual celebration with amazing food, great friends and a night of dancing and prizes! See to the left for more details!

SENIOR NITE OUT—TAKE 2

Tues. May 20th | 4:00pm
Wauseon, OH | \$5 Transportation
 Could make it the first time, Join us this time around at El Jarro for a great evening chalk full fun with great Friends!

SHIPSHEWANA TRIP

Tues. May 27th | 9:00am
Shipshewana, IN | \$5 Transportation
 We will be heading over to Good Ol' Amish Country for a day of shopping, eating, fun, eating and did I mention eating all of that home cooked food???

DAY AT THE MOVIES

Fri. May 30th | 8:45am
Sponsored by Kingsbury Place
 Join your friends for a great movie, popcorn and pop at Phoenix Theater in Defiance. The 1st 24 people signed up are free, only \$10 for anyone after.

SUMMIT 60 SOCIAL CENTER OF DEFIANCE ACTIVITIES

MAY 2025 NEWSLETTER | PAGE 03

MONDAY	TUESDAY	WEDNESDAY	THURSDAY	FRIDAY
			Kentucky Derby Hat Day 01	Birthday Day 02
KEY: <u>Green:</u> Trip or Event <u>Red:</u> Theme of the day <u>Orange:</u> Grocery Trip <u>Blue:</u> Activities with a low cost to them!	Grocery Trips 9am-10:30am Walmart - 5/6 Kroger - 5/13 Meijer - 5/20 Aldi - 5/27		9- Warrior Strength 9:30- Pepper 10- Creative Crafts 11:30 Blood Pressures 11:30- Derby Hats! 12:30- Bingo with MedCare 1 1-Alzheimer's Support 3- Yoga-\$45/Month	9- Cardio Drumming 9:30 Pepper 10- Tai Chi 11- Pinball 11:30 Birthday Lunch 1- Zumba- \$5 2-Shuffle Board
CINCO DE MAYO 05	Election Day—Gym Closed 06	07	Cupcake Day 08	09
9- Cardio Drumming 9:30 Pepper 10- Cardio Drumming 11-Scrabble 11:30 Cinco De Mayo 12:30 Pie Bingo with Glen Park 2- Shuffle Board	9:30- Pepper 10- Bible Study 11-Skipbo 2- Puzzles 4- Senior Nite Out #1	9- Cardio Drumming 9:30-Yahtzee 10-Cardio Drumming 11- Shoot Pool 11:30 Lunch & Learn with Humana 12:30 Shuffle Board 2- Origami Art	9-Warrior Strength 9:30 Pepper 10-Decorate Cupcakes 12:30 Chair Volley Ball 2- Pacman 3-4- Yoga-\$45/Month	9- Cardio Drumming 9:30 Pepper 10- Tai Chi 10 -Mother's Day Tea 11- Pinball 1-Zumba Gold—\$5 2- Shuffle board
12	13	14	Flower Day 15	Center Closed 16
9- Cardio Drumming 9:30 Pepper 10- Cardio Drumming 11-Scrabble 12:30-Chair Volley ball 2- Shuffle Board	8:50-Warrior Strength 9:30- Pepper 10- Bible Study 10- Tai Chi 11-Skipbo 1-Zumba Gold—\$5 2- Puzzles 3-4 Yoga-\$45/month	9-Cardio Drumming 9:30 - Yahtzee 10- Cardio Drumming 11- Shoot Pool 12:30 Shuffle Board 1- Jewelry making 2-Origami Art 3-Line Dancing	9-Warrior Strength 9:30 Pepper 9:30 Grief Support Grp 11:30 Blood Pressures 12:30 Bingo with Legacy of Defiance 1:30 Creative Crafts 3-4 Yoga \$45/month	Senior Gala at the Eagles in Defiance! Doors open At 4pm! Cost \$25
19	20	21	Sherlock Holmes Day 22	23
9- Cardio Drumming 9:30 Pepper 10- Cardio Drumming 10:30 Euchre Tournament 11- Scrabble 12:30 Bingo by Kingsbury Place 2- Shuffle Board	8:50-Warrior Strength 9:30 Pepper 10 Bible Study 10- Tai Chi 11- Skipbo 1- Zumba Gold \$5 2-Puzzles 4- Senior Nite out #2	9 Cardio Drumming 9:30 Snack & Game Day (New) 10-Cardio Drumming 10 " The Compassion Connection " with First Health 2- Origami Art	9-Warrior Strength 9:30- Pepper 10-Monopoly 11:30 Sherlock Holmes Trivia 12:30-Bingo by CHP 2- Pacman 3-4 Yoga- \$45/month	9- Cardio Drumming 9:30 Pepper 10-Tai Chi 11- Pinball 1-Zumba Gold—\$5 2- Shuffle Board
26	27	28	Mountain Painting 29	30
9- Cardio Drumming 9:30 pepper 10- Cardio Drumming 11- Penny Pitch with Meadows of Kalida 12:30 Summit 60 Bingo 2- Shuffle Board	8:50-Warrior Strength 9- Shipshewana Trip 9:30 Pepper 10 Bible Study 10- Tai Chi 11-Skipbo 1-Zumba Gold—\$5 2- Puzzles 3-4 Yoga-\$45/month	9-Cardio Drumming 9:30 -Yahtzee Tournament 10- Cardio Drumming 11- Shoot Pool 1- Shuffle board 1- Commodity Box Distribution 2-Origami Art	9- Warrior Strength 9:30 pepper 10-Mountain Painting 10-Monopoly 12:30 Chair Volley ball 2- Pac Man 3-4 Yoga- \$45	8:45- Movie Day 9- Cardio Drumming 9:30 Pepper 10-Tai Chi 11- Pinball 1- Zumba- \$5 2- Shuffle board



CARDIO DRUMMING
9:00AM & 10:00AM MON & WED
9:00AM FRIDAY | FREE

TAI CHI
10:00AM TUE & FRI | FREE

ZUMBA GOLD
1:00PM TUE & FRI | \$5

WARRIOR STRENGTH
9:00AM TUE & THURS. | FREE


AFTERNOON YOGA
3:00PM TUE & THURS. |
\$45 MONTHLY (WAITLIST ONLY)

THE SUMMIT 60 FITNESS CENTER
DAILY 7:00AM - 3:00PM | FREE

LINE DANCING
3:00PM WED. MAY 14TH | FREE

WE WANT YOUR IDEAS!

We have a lot more ideas for activities, trips and events in the works, but we want to know what you want! If you have any suggestions please let our Activities Coordinator, Dawn or our Community Outreach Manager, Jenn know at 419-782-3233!



I am a plant commonly found in May gardens, known for my fragrant purple flowers.
What am I?

Answer: Lilac




The Defiance County Veterans Office
WE CONNECT VETERANS TO BENEFITS

VA CLAIMS, APPLY FOR VA HEALTHCARE,
VA TRANSPORTATION, EMERGENCY ASSISTANCE

OFFICE: 419-782-6861
FAX: 419-782-6713

📍 1300 E Second St., Suite 102, Defiance, OH
✉ veterans@defiancecounty.oh.gov
📘 Defiance County Ohio Veterans Office


Veterans Crisis Hotline: 988 Press 1 or text 838255

DEFIANCE PUBLIC LIBRARY SYSTEM OFFERS
HOMEBOUND DELIVERY

YOUR LIBRARY PICKS, DELIVERED TO YOUR DOOR!

CALL 419-782-1456 TO LEARN MORE.

AVAILABLE TO ELIGIBLE PATRONS | DEFIANCENLIBRARY.ORG




THE MEADOWS OF KALIDA

ASSISTED LIVING
MEMORY CARE
ADULT DAY SERVICES
REHAB & SKILLED SERVICES

419-664-5590
755 Ottawa St, Kalida, OH 45853
meadowsofkalida.com | f

THIS 9/129-24



OLDER AMERICANS MONTH 

Older Americans Month "Flip the Script on Aging 2025"

Flip the Script on Aging, focuses on transforming how society perceives, talks about, and approaches aging. It encourages individuals and communities to challenge stereotypes and dispel misconceptions.

This year for Older Americans Month we would like to honor older adults' contributions, exploring the many opportunities for staying active and engaged as we age, and highlighting the opportunities for purpose, exploration, and connection that come with aging.

We have Volunteer opportunities for our Seniors available at our Center. Along with many fitness program options and activities for your Mind, body and soul.



NO MEALS ON WHEELS

Both Defiance and Hicksville centers will be closed and we will not be delivering Meals on Wheels on the following dates in the month of May:

Friday May 16th
To prepare for our Annual Senior Gala Dinner.

Monday May 26th
In Observance of Memorial Day.

THRIVE
LOCALLY 



Ohio Senior Insurance

**Turning 65?
New to Medicare?**

Your Medicare & Retirement Specialists

**Looking to plan for the future,
give us a call 1-866-603-0491**

**Medicare, Life Insurance,
Long-term Care, Home Health Care,
Final Expense & Annuities**

1101 Ralston Ave., Ste. A • Defiance
Amanda Nigh Stephanie Wagner, RSSA




**SUPPORT OUR
ADVERTISERS!**



CHOICE

PHYSICAL THERAPY
PASSIONATE. PERSONAL. PROFESSIONAL.

www.choice-physicaltherapy.com
6 am-7pm Monday-Friday • Saturday by appointment
143 East High Street, Hicksville, OH 43526

One on one Personalized care
All appointments are with a Physical Therapist
Local Physical Therapists
In- Home Physical Therapy
(419) 769-8400



**SUMMIT 60 SOCIAL CENTER PRESENTS
HAWAII**

**WITH NORWEGIAN CRUISE LINE ON THE PRIDE OF AMERICA
8 DAYS / 7 NIGHTS ~ NOVEMBER 1 – 8, 2025**

DAY	PORT	ARRIVE	DEPART
1	Honolulu, Oahu (EMBARK)		7:00 pm
2	Kahului, Maui	8:00 am	Overnight
3	Kahului, Maui		6:00 pm
4	Hilo, Hawaii	8:00 am	6:00 pm
5	Kona, Hawaii	7:00 am	5:30 pm
6	Nawiliwili, Kauai	8:00 am	Overnight
7	Nawiliwili, Kauai		5:30 pm
8	Honolulu, Oahu (DISEMBARK)	7:00 am	

**Oceanview and Balcony Cabins Get ALL 4 perks! Inside Cabins Pick 2 Perks.
PLUS Each Cabin receives a \$100 onboard credit!
Package is subject to change. All guests in a cabin must choose the same perks.**

Hawaii Beverage Package*

Specialty 2-Meal Dining Package for Balcony Cabins*

Specialty 1-Meal Dining Package for Inside & Oceanview Cabins*

150 Minute Internet Package per person

\$50 Shore Excursion Credit per cabin*

*Gratuities are included. Call for details ~ 1-800-423-0247. Hawaii Beverage Package and Specialty dining applies to first 2 guests in cabin. The \$50 Shore Excursion Credit applies to guest 1.

INCLUDES GRATUITIES FOR AMENITY PACKAGE AND ON-BOARD SERVICE GRATUITIES

Inside Cabin Category	IA	\$5,300
Inside Cabin Category	IB	\$5,300
Balcony Cabin Category	BB	\$5,955

Rates are per person double occupancy and include roundtrip airfare from Ft. Wayne, cruise, service gratuities, beverage and dining package gratuities, port charges, government fees, taxes and transfers to/from ship. AIR PRICES ARE SUBJECT TO CHANGE AND WILL BE TICKETED ONCE YOUR GROUP IS PAID IN FULL. FLIGHTS ARE NON-REFUNDABLE ONCE TICKETED.

DEPOSIT POLICY: An initial deposit of \$350 per person double occupancy or \$700 per person single occupancy is required in order to secure reservations and assign cabins. Final balance is due by June 4, 2025. **These are the best rates around! Those who book early get the best prices and the best cabin locations. [MAKE A RESERVATION](#) at grandamericantours.com.**

Itinerary, Perks, and Prices are subject to change.

FOR RESERVATIONS AND INFORMATION CONTACT JENNIFER NELSON AT 419-769-8046

SUMMIT 60 SOCIAL CENTER OF HICKSVILLE ACTIVITIES

PAGE 07 | MAY 2025 NEWSLETTER

MONDAY	TUESDAY	WEDNESDAY	THURSDAY	FRIDAY
			Kentucky Derby Hat Day 01	Center Closed 02
<p>KEY: Green: Trip or Event Red: Theme of the day Orange: Grocery Trip Blue: Activities with a low cost to them!</p>			9am- Skip-Bo 9am- Rummy 9am- Puzzles 12:30pm- Corn Hole	
05	Center Closed 06	Center Closed 07	Cupcake Day 08	Center Closed 09
9am- Skip-Bo 9am- Rummy 9am- Puzzles 1:00pm—BINGO Summit 60	Senior Nite Out #1		9am- Skip-Bo 9am- Rummy 9am- Puzzles 10am-Cupcake Surprise 12:30pm- Volleyball	Mother's Day Tea
12	Center Closed 13	Center Closed 14	Flower Day 15	Center Closed 16
9am- Skip-Bo 9am- Rummy 9am- Puzzles 11am-Blood Pressure Checks 1:00pm—BINGO with Vancrest		Mystery Lunch Line Dancing	9am- Skip-Bo 9am- Rummy 9am- Puzzles 10am-Flower Surprise 12:30pm- Penny Pitch	Senior Gala
Birthday Day 19	Center Closed 20	Center Closed 21	Shirlock Holmes Trivia 22	Center Closed 23
9am- Skip-Bo 9am- Rummy 9am- Puzzles 1:00pm—BINGO Select Medical Rehab	Senior Nite Out #2	MudHen's Baseball Game	9am- Skip-Bo 9am- Rummy 9am- Puzzles 10-Letters of Love with First Health Hospice 12:30pm-Shirlock Holmes Trivia	
26	Center Closed 27	Center Closed 28	Mountain Painting 29	Center Closed 30
CLOSED	Shipshewana Trip	12:30pm-Commodity Box Distribution	9am- Skip-Bo 9am- Rummy 9am- Puzzles 11am- Blood Pressures 12:30pm-Canvas Painting	Movie Day



TRANSPORTATION

We offer transportation to doctors appointments, haircuts, medication pick-ups and more to anyone in Defiance County 60+!

Suggested donation is only 50¢ a mile!

Please note we do not turn away anyone who cannot afford the donation.

We also offer transportation to and from Summit 60 Social Centers in Defiance & Hicksville!

Give us a call and schedule today at 419-782-3233!

COMMODITY BOX DISTRIBUTION

40LBS OF SHELF STABLE FOOD AND 2LBS OF CHEESE!

Wed. May 28th

Summit 60 - Defiance:
1:00pm-2:30pm

Summit 60 of Hicksville:
12:30pm-2:00pm

This is a free program!

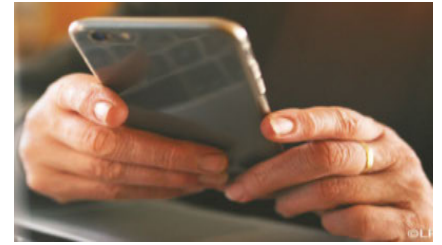
First come, first serve.

For an application please contact Sue at 419-782-3233!

DCSS

**140 E. Broadway St
Defiance, OH 43512
Attn: Sue Weller**

Please no pets at pick up.
Thank you!



NEED TO CANCEL YOUR HOME DELIVERED MEAL?

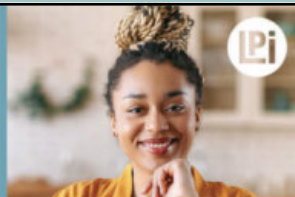
Did you have an appointment that ran over, spur of the moment trip with friends, or just not going to be home today? Please give Ginny in our kitchen a call as soon as possible so we can take you off our delivery route that day at 419-782-3321!

WE'RE HIRING!

AD SALES EXECUTIVES

BE YOURSELF.
BRING YOUR PASSION.
WORK WITH PURPOSE.

- Paid training • Some travel
- Work-life balance
- Full-Time with benefits
- Serve your community



Contact us at
careers@4ipi.com or
www.4ipi.com/careers



LET'S GROW YOUR BUSINESS

Advertise in our Newsletter!

**CONTACT ME
Jayne Pandy**

**jpany@lpicommunities.com
(800) 477-4574 x6401**

Locally and family owned since 1850

Serving All Faiths

Offering Non-pressured and Non-solicited
Pre-need Services • Burial Services • Cremation Services



SCHAFFER
Funeral Home, Inc.

Licensed Funeral Directors:

**Dan Schaffer • Jeff Strayer • Natasha Hussey
Hanna Schaffer • Curtis Richards**

(419) 784-2441

529 Jefferson Ave, Defiance
1753 S. Clinton St, Defiance

www.schafferfh.com





DID YOU KNOW WE ARE A NATIONAL MEMBER OF MEALS ON WHEELS OF AMERICA?

If you or someone you know is interested in receiving our home delivered meals please give us a call at 419-782-3233!



WHERE ELSE ARE YOU GOING TO GET A MEAL FOR JUST \$3.00?!

The answer is nowhere! Suggested donations for our dine in lunches and Meals on Wheels are only \$3, but we can get you an even better deal! If you purchase our [20 for \\$50 Meal Deal Coupons](#), that makes each meal only \$2.50!!

Please note that no patron, 60 years or better will be denied meals due to inability to pay.



MAKE YOUR RESERVATIONS TODAY!

Lunch is served from 11:30am - 12:30pm, Mon - Fri at the Defiance Center.

To best serve you, please call in by 8:00am the day of to reserve your spot. An alternative meal will be available for those without a reservation.

You can make a reservation in person or by calling us at 419-782-3233!




Serving the Community for 60 years

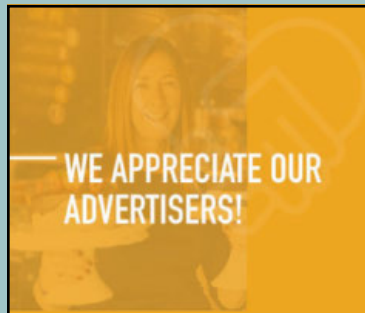
Defiance Moose Lodge 2094

Live Entertainment!
Every Wednesday, Friday, and Saturday!

~ NEVER A COVER CHARGE ~
Food Specials & Happy Hours

(419) 782-2326 • 841 N Clinton St, Defiance

Check out our facebook page to see what's happening each week!
www.facebook.com/defiancemoose2094/




TRUSTWELL LIVING
KINGSBURY PLACE

419-782-6324

245 W Rosewood Ave, Defiance, OH 43512

<https://www.trustwellliving.com/senior-living/oh/defiance/kingsbury-place/>

- Assisted Living
- Respite Care
- Activities & fitness classes
- Restaurant-style dining
- Personal care
- Medication assistance

NEVER MISS OUR NEWSLETTER!

SUBSCRIBE


Have our newsletter emailed to you.

Visit www.mycommunityonline.com



ARE YOU REACHING THE MEMBERS IN YOUR COMMUNITY?

To advertise here visit lpicommunities.com/adcreator



EXPERIENCE
COZY PATIOS

Our patio homes offer carefree living.
We offer unlimited first-class amenities
that you will experience daily!



INDEPENDENT
LIVING

MEMORY
CARE

ASSISTED
LIVING

EXTENDING OUR CULTURE OF CARE
TO EVERY RESIDENT AND THEIR FAMILY



Call Paige or Iyan at:
419-956-7606
to schedule your personal tour
of our various floor plans.



Scan the code to go
to our website!

LOCAL OWNERSHIP

- Casual and fine dining open all day
- Vibrant life activities schedule
- Beautifully appointed patio homes and apartments in a variety of styles and views
- Complimentary local scheduled transportation
- Exercise programs and fitness center
- Inclusive utilities, housekeeping, and laundry package
- Maintenance free living – routine and scheduled
- Pet friendly – because some of our best friends have fur!



DefianceSeniorLiving.com . 309 Latchaw Drive . Defiance, OH 43512

May

2025

Home Delivered Meals 419 782-3321

MONDAY

TUESDAY

WEDNESDAY

THURSDAY

FRIDAY

Menu is subject to change based upon product availability

<p>5</p> <p>Beef Tacos Spanish Rice Refried Beans Fruit Cocktail</p>	<p>6</p> <p>Salisbury Steak Mashed Potatoes Green Bean Casserole Peas Dinner Roll</p>	<p>7</p> <p>Sub Sandwich Brown Bean Salad Celery Sticks w/Peanut Butter Grapes</p>	<p>1</p> <p>Goulash Wax Beans Cole Slaw Cinnamon Peaches Garlic Bread</p>	<p>2</p> <p>Baked Chicken Loaded Mashed Potatoes Peas and Pearl Onions Apricots Dinner Roll Birthday Cake</p>
<p>12</p> <p>Sloppy Joe String Cheese Peas and Mushrooms Cole Slaw Blueberry Crisp</p>	<p>13</p> <p>Ham Diced Potatoes Garlic Chalet Vegetables Grape Juice Wheat Bread</p>	<p>14</p> <p>Country Fried Steak Mashed Potatoes Mailbu Blend Vegetables Tropical Fruit Wheat Bread</p>	<p>8</p> <p>Hamburger Gravy Mashed Potatoes Brussel Sprouts Mandarin Oranges Wheat Bread</p>	<p>9</p> <p>Pork Chop Scalloped Potatoes Tossed Salad Cinnamon Applesauce Dinner Roll</p>
<p>19</p> <p>Hot Beef Sandwich Sweet Potato Fries European Blend Vegetables Grapes</p>	<p>20</p> <p>Chicken and Noodles Mixed Vegetables Glazed Carrots Banana Dinner Roll</p>	<p>21</p> <p>Baked Fish Rice Pilaf Peas Ambrosia Salad Apple Juice Wheat Bread</p>	<p>15</p> <p>Cheese Omelet Hash Browns Sausage links V8 juice Baked Apples Banana Nut Muffin</p>	<p>23</p> <p>Chicken Strips Oven Fries 3 Bean Salad Cherry Crisp Wheat Bread</p>
<p>26</p> <p>Memorial Day</p>	<p>27</p> <p>Chili Dog Tater Tots Baked Beans Apple Slices</p>	<p>28</p> <p>Sausage Gray Hashbrown Casserole Stewed Tomatoes Tangerine Biscuit</p>	<p>29</p> <p>Beef Manhattan Mashed Potatoes Red Beets Tropical Fruit</p>	<p>30</p> <p>Grilled Chicken Breas Rice Pilaf Tossed Salad Roasted Cabbage Apple Crisp Dinner Roll</p>

News

Home delivered meals must be consumed within 30 minutes of delivery or refrigerated and reheated at 350 degrees for 15 minutes

The following major food allergens may be used as ingredients:

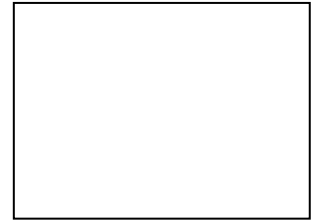
- Milk, Egg, Fish,
- Crustacean Shellfish
- Tree nuts, Peanuts,
- Wheat, Soy, Sesame

To cancel a meal, or inquire about ingredients, please call Ginny at 419 782-3321



**Defiance County
SENIOR SERVICES**

140 E. Broadway St.
Defiance, OH 43512



 **FOLLOW US ON FACEBOOK AT**

SUMMIT 60 SOCIAL CENTER & DEFIANCE COUNTY SENIOR SERVICES

WE ARE HERE FOR YOU, GIVE US A CALL TODAY!

Nick Wichman

Director
(419) 782-3232

Jessica Osborn

Business Manager
(419) 783-4850

Lexie McKeen, LPN

Client Resource Specialist
(419) 783-4812

Ginny Wiseman

Nutrition Manager
(419) 782-3321

Jenn Nelson

Community Outreach Manager
(419) 769-8046

**Senior Services
Main Line**

(419) 782-3233

Sue Weller

*Client Concierge
& Commodities Coordinator*

Dawn Knox

Activities Coordinator

Penny Cryer

Custodian

Suzy Mack

Staff Assistant

Kitchen Team

*Mary Mansfield,
Sandy Kaufman, Deb Vajen,
Diane Bok*

Meals on Wheels Team

*Jennifer Lero, Mike Rychener,
Myra Emmons, Vicky Healy,
Jodi Cocke, Karen Fitzwater,
Michael Imber, Isaiah Almanza,
Gae Ann Lind*

Transportation Team

*Dennis Scott, Keith Ashbacher,
Oline Hill, Don Heffner*



FUNDING SOURCES FOR DEFIANCE COUNTY SENIOR SERVICES:

Our Senior Services Tax Levy, Area Office on Aging, Defiance County Senior Services Auxiliary Board, Defiance County Commissioners, and generous donations from patrons like you!

Thank you for your continued support!